



Meadow Cottage Mount Rule, Douglas, Isle Of Man, IM4 4HT
Asking Price £779,950



- Beautifully appointed cottage in peaceful Mount Rule, Circa 3,000 sq.ft
- Five double bedrooms including a principal suite, plus family bathroom and ground floor shower room
- Multiple reception rooms including the original Manx cottage living room with stone fireplace
- Separate home office, ideal for remote working
- Stunning south-facing lawned garden with private conservatory overlooking the grounds
- Detached double garage with extensive off-road parking



Meadow Cottage Mount Rule, Douglas, Isle Of Man, IM4 4HT

Meadow Cottage, Mount Rule, offers an inviting blend of traditional Manx character and generous modern living, set within one of the Island's most desirable rural locations. Extending to circa 3,000 sq.ft, this beautifully appointed home enjoys a wonderfully flexible layout ideal for family living, entertaining, or multi-generational use.

At its heart is the original Manx cottage living room, a warm and atmospheric space featuring a striking Manx stone fireplace, preserving the heritage charm of the property. Several additional reception rooms provide excellent versatility—perfect for creating a formal lounge, snug, playroom or hobby space to suit evolving needs.

A standout feature is the garden conservatory, positioned to make the most of the property's true south-facing aspect. Overlooking the mature lawned gardens, it offers a peaceful and private setting for year-round enjoyment—ideal for morning coffee, reading, or hosting guests while immersed in nature.

The accommodation includes five well-proportioned double bedrooms, ensuring comfort for family and visitors alike. The principal bedroom benefits from its own en suite, while a further family bathroom and a ground floor shower room provide convenience across both levels. A separate home office adds valuable workspace for remote working or study.

Externally, the property continues to impress with a detached double garage, excellent storage options and ample off-road parking, making it ideal for households with multiple vehicles or outdoor pursuits. The gardens surrounding the home are beautifully maintained, offering privacy, space and an exceptional setting in which to relax and unwind.

Meadow Cottage represents a rare opportunity to secure a substantial, character-filled home in a peaceful countryside setting, just a short drive from Douglas yet enjoying complete tranquillity.











Meadow Cottage Mount Rule, Douglas, Isle Of Man, IM4 4HT

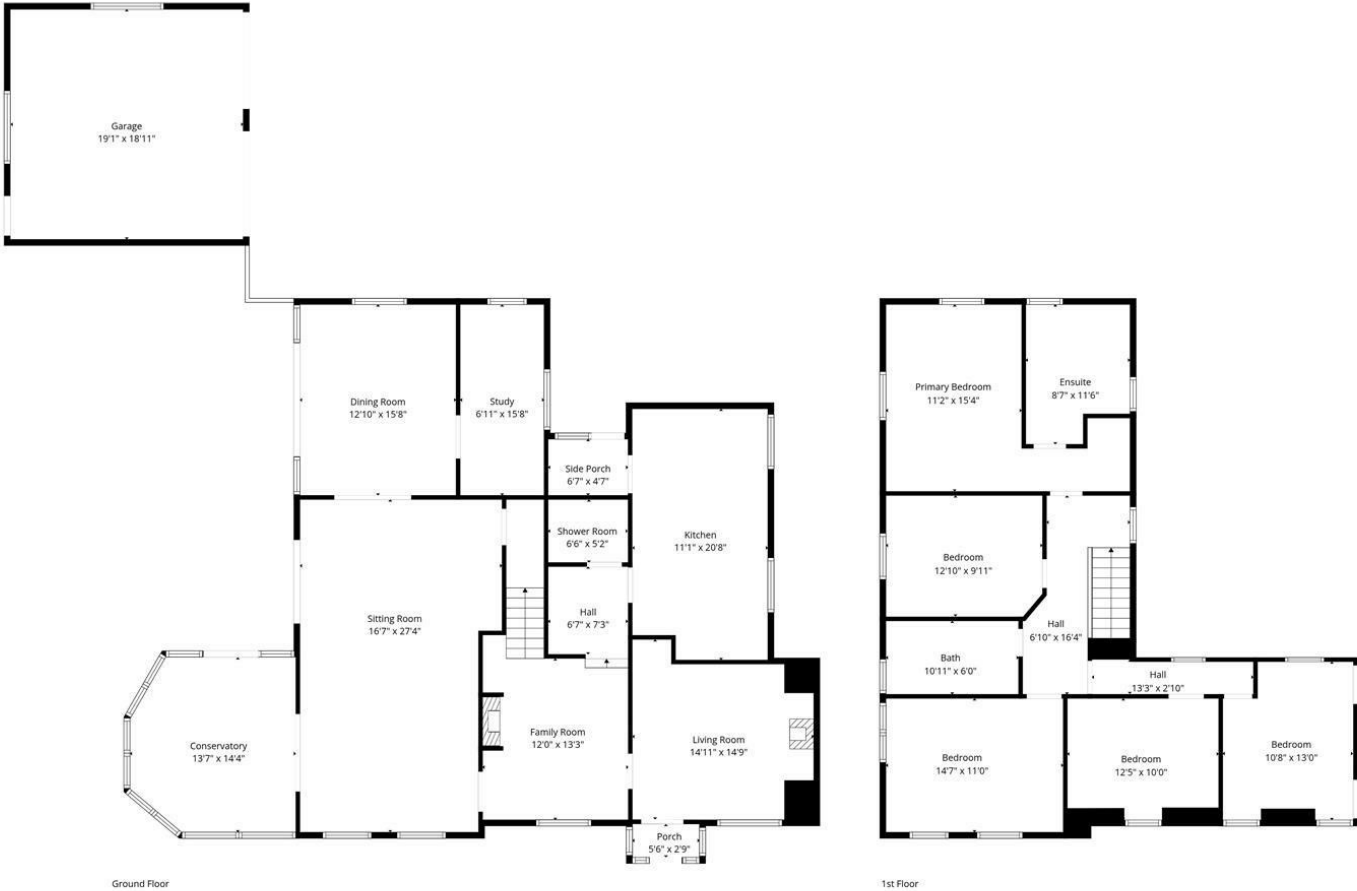


Meadow Cottage Mount Rule, Douglas, Isle Of Man, IM4 4HT









TOTAL: 2804 sq. ft
Ground floor: 1700 sq. ft, 1st floor: 1104 sq. ft
EXCLUDED AREAS: PORCH: 15 sq. ft, GARAGE: 361 sq. ft, WALLS: 221 sq. ft

Floor Plan Created By Cubicasa App. Measurements Deemed Highly Reliable But Not Guaranteed.



DOUGLAS
37 VICTORIA STREET
DOUGLAS
ISLE OF MAN IM1 2LF
T 01624 620606
F 01624 677363
E info@deanwood.co.im

CASTLETOWN
COMPTON HOUSE
9 CASTLE STREET CASTLETOWN
ISLE OF MAN IM9 1LF
T 01624 825995
F 01624 825996
E castletown@deanwood.co.im

RAMSEY
LEZAYRE HOUSE
87 PARLIAMENT STREET
RAMSEY ISLE OF MAN IM8 1AQ
T 01624 816111
F 01624 816588
E ramsey@deanwood.co.im

These particulars are for information purposes only. They do not constitute or form any contract nor should any statement contained herein be relied upon as a representation of fact. Neither the vendor nor DeanWood Agencies Limited ('the firm'), nor any officer or employee of the firm accept liability or responsibility for any statement contained herein. The vendor does not by these particulars, nor does the firm, nor does any officer or any employee of the firm have any authority to make or give any representation or warranty whatsoever as regards the property or otherwise. It is the sole responsibility of any person interested in the property described in these particulars to make all proper enquiries and searches to verify the description of the property and all other particulars herein.

FOR MORE PROPERTIES VISIT OUR WEBSITE @ **deanwood.im**